



Technical Tip 1

Routing SMS comfort to another SMTP mail server

The SMTP Server relays on a Smart Host Connector to an external mail server on the Internet.

DNS is used to determine the IP address of a domain name on other DNS Connectors. To send mail directly to another mail server.

Often a combination of SMTP and/or DNS setup is used, but that's quite common in email routing.

These are setup guidelines to set up a connection between SMS Comfort and a SMTP mail server. Sonal will **not** be in any way held **responsible for possible** invalid or incorrect information on this matter.

[MS Exchange 2003](#)
[MS Exchange 2000](#)
[MS Exchange 5.5](#)
[Novell GroupWise 6.5](#)
[MDaemon](#)
[Lotus Notes and Domino](#)
[First Class](#)
[Eudora](#)
[Zafra](#)



MS Exchange 2003

<http://support.microsoft.com/kb/265293>

To use the Microsoft Exchange System Manager application, select the properties of the SMTP connector.

Enter SMS Comfort [IP Address] , click OK.

Note: In Exchange 2003 the SMTP connector is located under: Administrative Groups > First Administrative Group > Routing Groups > First Routing Group* > Connectors
Name may vary depending on local settings.

Properties [?] [X]

Address Space | Connected Routing Groups | Delivery Restrictions
Content Restrictions | Delivery Options | Advanced | Details

General

Name:

Use DNS to route to each address space on this connector
 Forward all mail through this connector to the following smart hosts

Local bridgeheads:

Server	Virtual Server
SRV1	Default SMTP Virtual Server

Do not allow public folder referrals

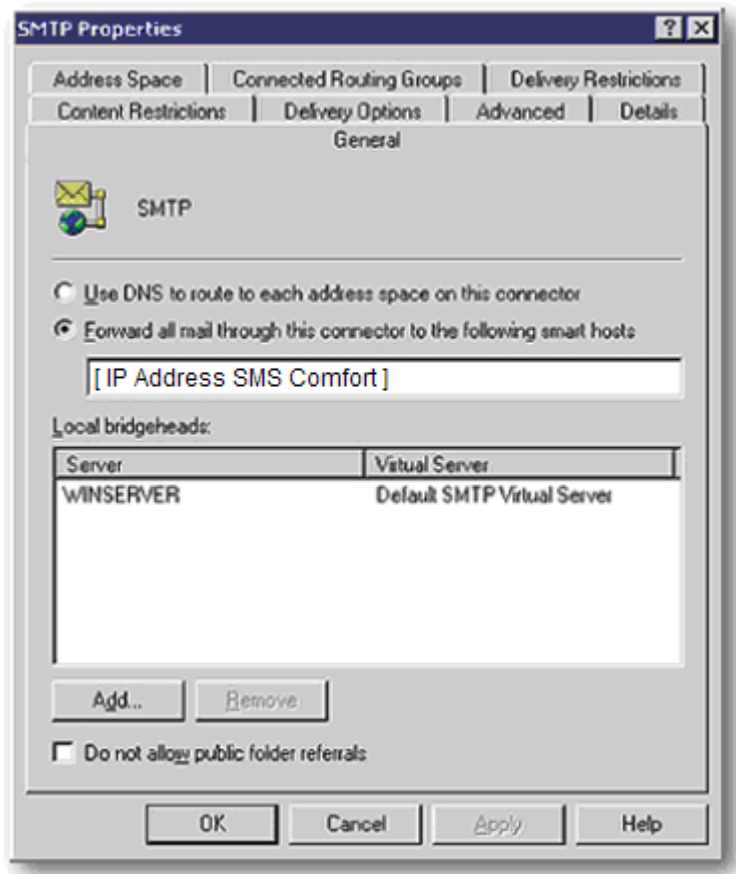


MS Exchange 2000

<http://support.microsoft.com/kb/265293>

To use the Microsoft Exchange System Manager application, select the properties of the SMTP connector.

Enter SMS Comfort [IP Address], click OK.





MS Exchange 5.5

<http://www.microsoft.com/technet/archive/exchangeserver55/deploy/imsnte.msp?mfr=true>

To use the Microsoft Exchange Administrator application, navigate to the Internet Mail Connector's configuration - this is at:

Organization\Site\Configuration\Connections\Internet Mail Service\Server

Select the Connections tab, you will see the following screen:

The screenshot shows the 'Internet Mail Service (CHELSEA) Properties' dialog box with the 'Connections' tab selected. The 'Transfer Mode' section has 'Inbound & Outbound' selected. The 'Message Delivery' section has 'Forward all messages to host:' selected with 'poole.cap.com' in the text box. The 'Specify by E-Mail Domain:' button is highlighted. The 'Accept Connections' section has 'From any host (secure or non-secure)' selected. The 'Service Message Queues' section has a 'Retry interval (hrs):' of '.25, .5, 1, 4'. At the bottom, there are 'OK', 'Cancel', 'Apply', and 'Help' buttons.

Click the button E-Mail Domain

The screenshot shows the 'E-Mail Domains' dialog box. It contains a table with two columns: 'E-Mail Domain' and 'Deliver Using'. The table has three rows: 'sales.cap.com' (Deliver Using: weymouth.cap.com), 'rec.com' (Deliver Using: arsenal.cap.com), and 'SMS Comfort' (Deliver Using: [192.168.1.20]). To the right of the table are buttons for 'Add ...', 'Edit ...', 'Remove', 'Move Up', and 'Move Down'. At the bottom are 'OK', 'Cancel', and 'Help' buttons.

E-Mail Domain	Deliver Using
sales.cap.com	weymouth.cap.com
rec.com	arsenal.cap.com
SMS Comfort	[192.168.1.20]

The *E-Mail Domain* allows you to override the standard mail routing by using email domains.

SMS Comfort - 192.168.1.20

Click OK to save the settings and you will be prompted to stop and restart the Internet Mail Service.



Novell

Novell GroupWise 6.5 Connecting GroupWise Systems Through Other E-Mail Systems

Several GroupWise gateways allow GroupWise messages to pass through other e-mail systems with no loss of GroupWise functionality. This setup is termed "passthrough" or "tunneled" messaging. GroupWise messages are encapsulated into the format of the other e-mail system and sent to the GroupWise system on the other end. No GroupWise functionality is lost. This is a convenience when the other e-mail system is already configured to connect sites where GroupWise is also in use.

The gateways that can be used for passthrough messaging include:

- GroupWise 5.x/6.x Internet Agent
- GroupWise 4.1/5.0/5.1 SMTP/MIME Gateway
- GroupWise Gateway for Microsoft* Mail
- GroupWise Gateway for Lotus* Notes*
- GroupWise Gateway for Lotus cc:Mail*
- GroupWise Gateway for OfficeVision/VM*
- GroupWise X.400 Gateway
- GroupWise SNADS Gateway

For information about these gateways, see the GroupWise gateway guides at the [GroupWise 6.5 documentation Web site](http://www.novell.com/documentation/gw65) - <http://www.novell.com/documentation/gw65>

Configuring Basic SMTP/MIME Settings - Novell GroupWise 6.5

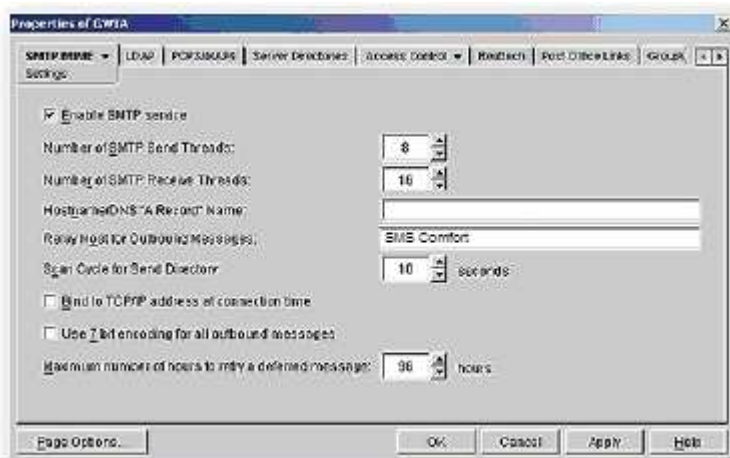
In Console One[®], right-click the Internet Agent object, then click Properties.

If the SMTP/MIME Settings page is not the default page, click SMTP/MIME > Settings.

Enter SMS Comfort in the Relay Host for Outbound Messages field.

Click OK to save the changes.

http://www.novell.com/documentation/gw65/index.html?page=/documentation/gw65/gw65_admin/data/a2zi22h.html#a2zi22h





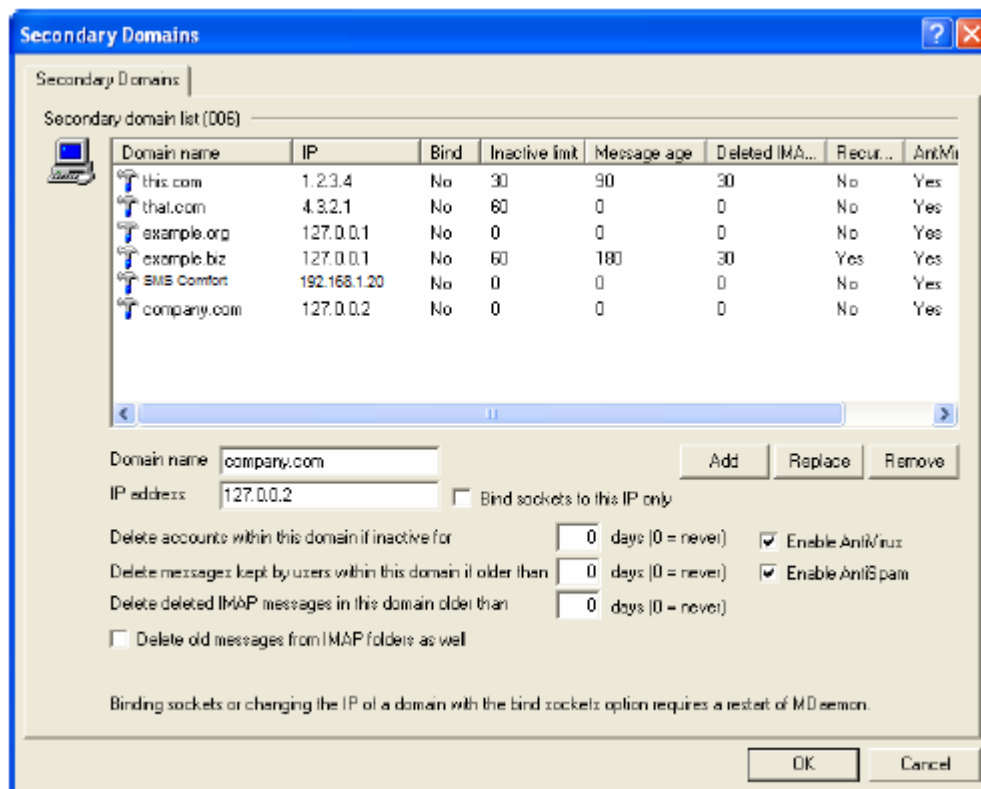
MDaemon

Secondary Domains Editor

http://files.altn.com/MDaemon/Release/MDaemon_en.pdf

MDaemon contains full support for multiple domains. In addition to the Primary Domain Configuration settings, it contains the **Secondary Domains Editor** used for designating any number of additional domains that you wish to support as well as the IP address to which each will be associated. MDaemon supports both dedicated (static) and multi-homed IP addresses.

On the Secondary Domains Editor, for each secondary domain that you wish to host, you will include: the domain name, the IP address to which it will be associated, and whether or not it will be bound to its IP address.





Lotus Notes and Domino

[Sending mail outside the local Internet domain](http://www-12.lotus.com/ldd/doc/domino_notes/Rnext/help6_admin.nsf/f4b82fbb75e942a6852566ac0037f284/1dac0b1a2a3ce7a385256c1d00395356?OpenDocument)

[http://www-](http://www-12.lotus.com/ldd/doc/domino_notes/Rnext/help6_admin.nsf/f4b82fbb75e942a6852566ac0037f284/1dac0b1a2a3ce7a385256c1d00395356?OpenDocument)

[12.lotus.com/ldd/doc/domino_notes/Rnext/help6_admin.nsf/f4b82fbb75e942a6852566ac0037f284/1dac0b1a2a3ce7a385256c1d00395356?OpenDocument](http://www-12.lotus.com/ldd/doc/domino_notes/Rnext/help6_admin.nsf/f4b82fbb75e942a6852566ac0037f284/1dac0b1a2a3ce7a385256c1d00395356?OpenDocument)

[The Domain Name System \(DNS\) and SMTP mail routing](http://www-12.lotus.com/ldd/doc/domino_notes/Rnext/help6_admin.nsf/f4b82fbb75e942a6852566ac0037f284/b775815941c92ddf85256c1d00394f23?OpenDocument)

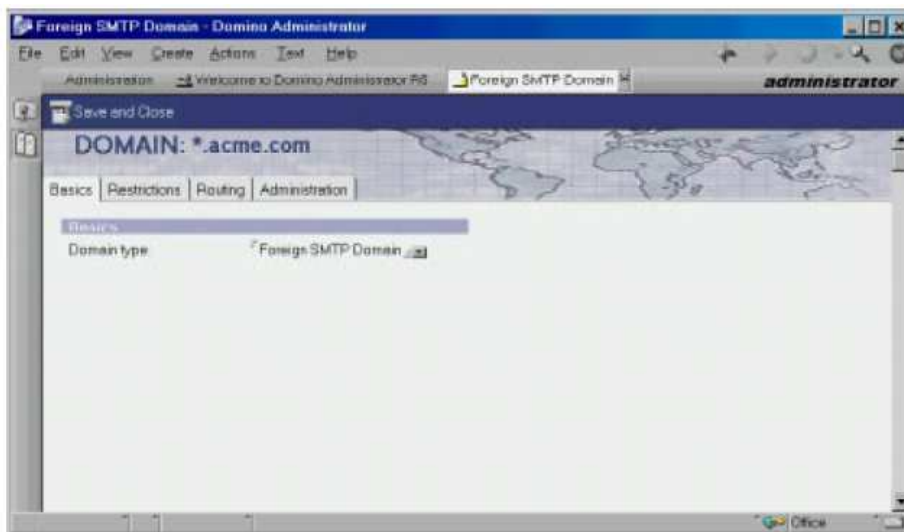
[http://www-](http://www-12.lotus.com/ldd/doc/domino_notes/Rnext/help6_admin.nsf/f4b82fbb75e942a6852566ac0037f284/b775815941c92ddf85256c1d00394f23?OpenDocument)

[12.lotus.com/ldd/doc/domino_notes/Rnext/help6_admin.nsf/f4b82fbb75e942a6852566ac0037f284/b775815941c92ddf85256c1d00394f23?OpenDocument](http://www-12.lotus.com/ldd/doc/domino_notes/Rnext/help6_admin.nsf/f4b82fbb75e942a6852566ac0037f284/b775815941c92ddf85256c1d00394f23?OpenDocument)

Creating a Foreign Domain Document for SMTP Mail Routing

In the Domino Administrator, perform these steps:

At the Domain view is displayed.

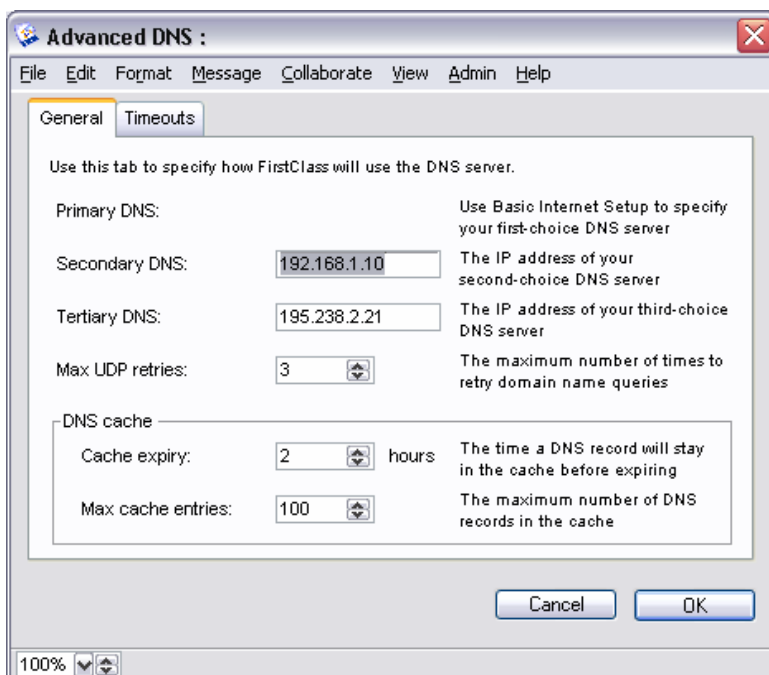
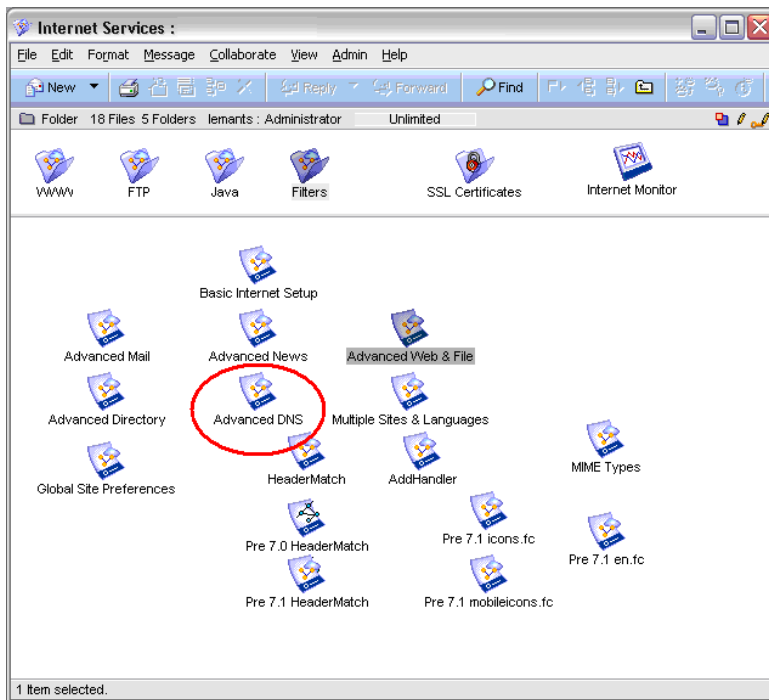




First Class

Server DNS routing.

<http://www.firstclass.com/support/SupportCommentary/IS/TN-IS%20tuning>
http://exchange.ucop.edu/_Help/Form/S0000E4C5?Templates=Help#Mail





Eudora

<http://eudora.com/search/query.html?qp=WM3+url%3A%2Fworldmail%2F&qt=smtp+routing&col=eudorakb+eudora2&qm=1>

Routing mail to another mail server

WorldMail 3 can be configured to route outgoing mail for a domain (or for all domains) to one or more specific mail server systems. This allows WorldMail 3 to act as an MX backup for another domain.

Solution:

To route mail for a specific domain to another mail server system, execute the following steps in the WorldMail 3 Management Center:

1. Open the **Server** folder.
2. Double-click the **Security** icon (**SMTP Security** in WorldMail 3)
3. Click on the **Accept mail relay for these domains** button.
4. Add the destination domains for which you want to route mail
5. Click **OK** to save your changes and close the Security dialog
6. In the Console window, double-click the **Routes** icon
7. Enter the destination domain name, select the **Force** option, and click Add.
8. Select the domain in the Domain Mask list and click the **Routes** button.
9. In the Routes dialog, enter the host name or IP address of the mail server system where mail for this domain should be routed. If you are entering multiple destinations, enter a number for the preference order (servers with lower numbers selected first).
10. Click **OK** to save the changes and close the Routes dialog.

Once these changes are made, WorldMail 3 will accept incoming mail for the domain and route it to the destination system.

To route mail destined for any domain to a specific mail server system (for example, an SMTP gateway), follow the above procedure using a wildcard (*) as the destination domain.