



Technical Tip 23

SMTP Connector on Exchange 2003

The SMTP Server relays mail to a *Smart Host Connector* to simply forward mail to a other mail server.

Install an Smart Host SMTP Connector *Exchange Server 2003*

To install an SMTP connector:

Start **System Manager**: On the **Start** menu, point to **Programs**, point to **Microsoft Exchange**, and then click **System Manager**.

Navigate to Connectors:

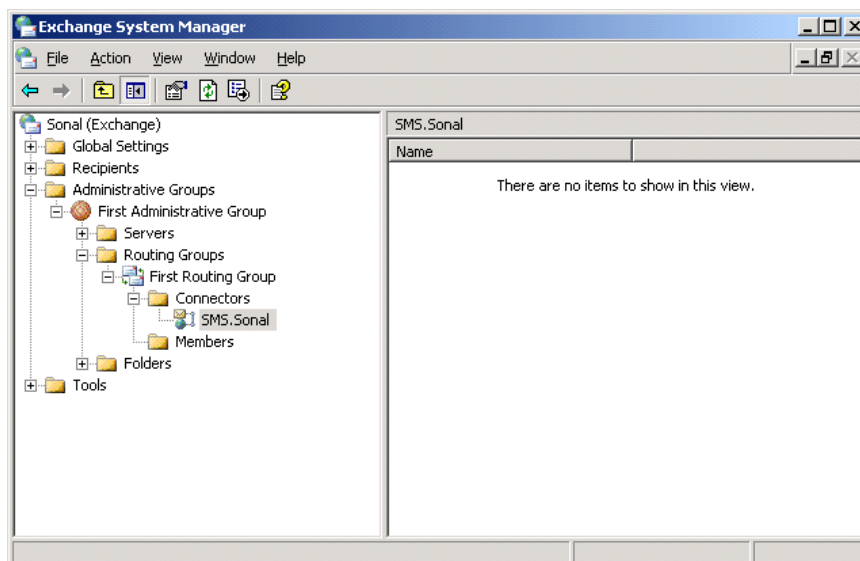
If you do not have routing groups defined:

System Manager

Administrative Groups

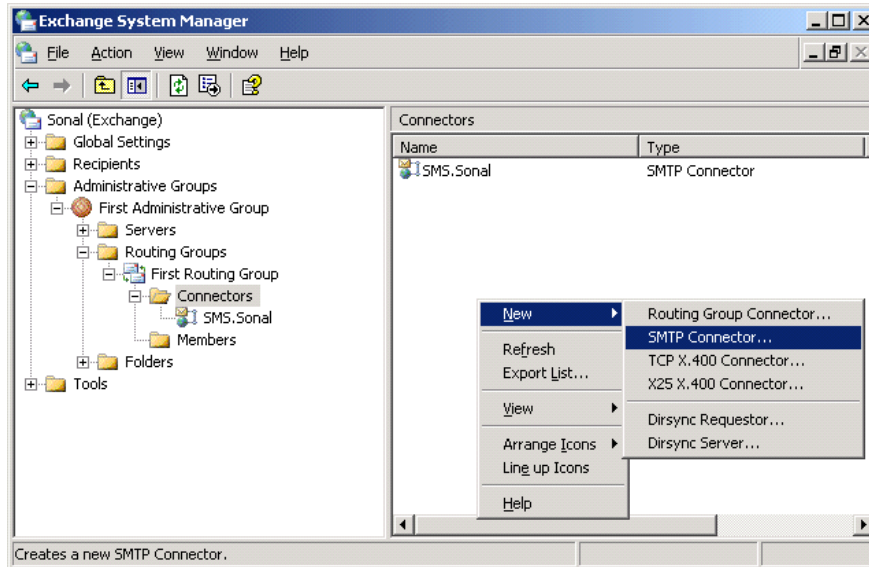
<Administrative Group>

Connectors



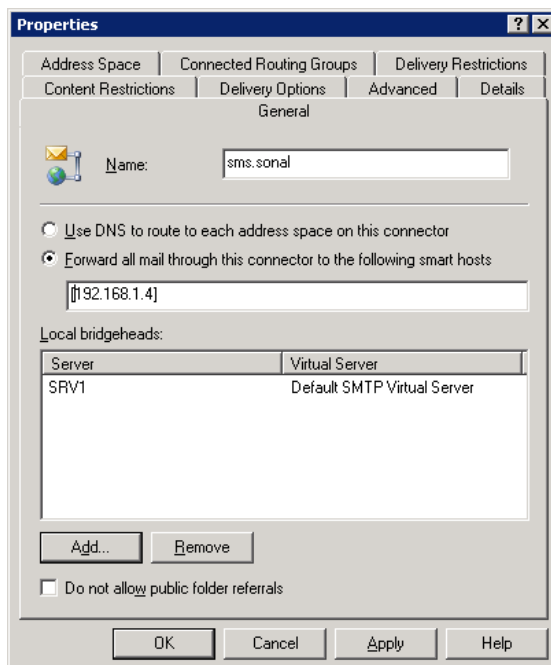


Right-click **Connectors**, select **New**, and then select **SMTP Connector**.



On the **General** tab, type the name of the connector. The name is usually the name of the routing group to which you are connecting.

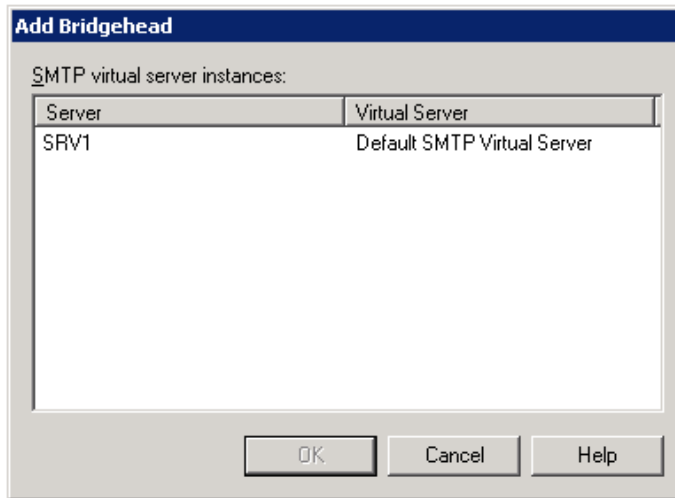
On the **General** tab, select **Forward all mail through this connector to following smart host**, and then type the name or IP address of the server through which you would like to route messages for this remote domain. This value overrides the smart host setting on the **Delivery** tab of the SMTP virtual server properties.



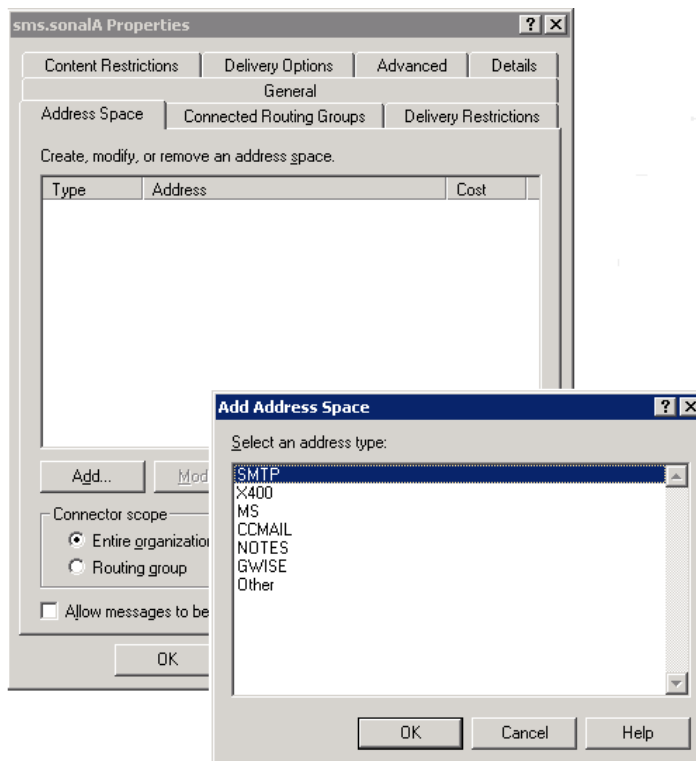
Note You can identify the smart host by a fully qualified domain name or an IP address (but if you change the IP address you will also have to change it on every virtual server). If you use an IP address, enclose it in brackets, [], to increase system performance. Microsoft SMTP Service first checks for a server name and then checks for an IP address. The brackets identify the value as an IP address, so the DNS lookup is bypassed.



On the **General** tab, under **Local Bridgeheads**, click **Add**, and then select a local bridgehead server from the list.




On the **Address Space** tab, click **Add**. Select an address type, and then type all necessary information in **Properties**, including cost.





Internet Address Space Properties [?] [X]

General

 SMTP

E-mail domain:

Cost:

OK Cancel Apply Help

SMS.Sonal Properties [?] [X]

General

Content Restrictions | Delivery Options | Advanced | Details

Address Space | Connected Routing Groups | Delivery Restrictions

Create, modify, or remove an address space.

Type	Address	Cost
SMTP	sms.sonal	1

Add... Modify... Remove

Connector scope

Entire organization

Routing group

Allow messages to be relayed to these domains

OK Cancel Apply Help