



Technical Tip 26

Install SMS Comfort on Exchange 2003 Mail Server

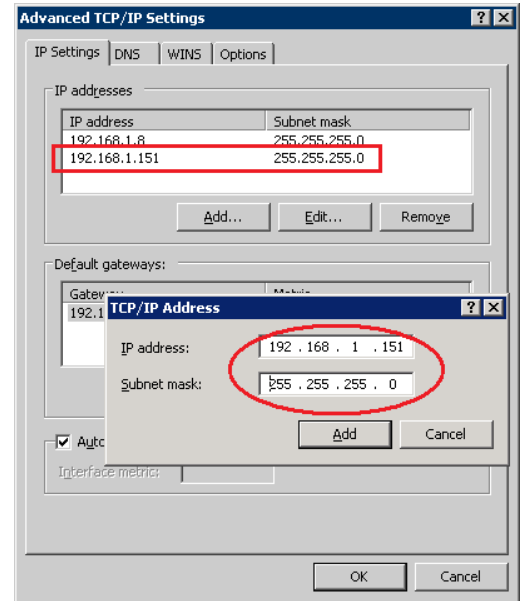
To install SMS comfort on the same server as your mail server you need to configure a few things on the mail server.

1. Configure an extra IP address on the NIC
2. Configure the “Default SMTP Virtual Server”
3. Install an Smart Host SMTP Connector
4. Install SMS comfort
5. Configure SMS comfort on a specified addresses.

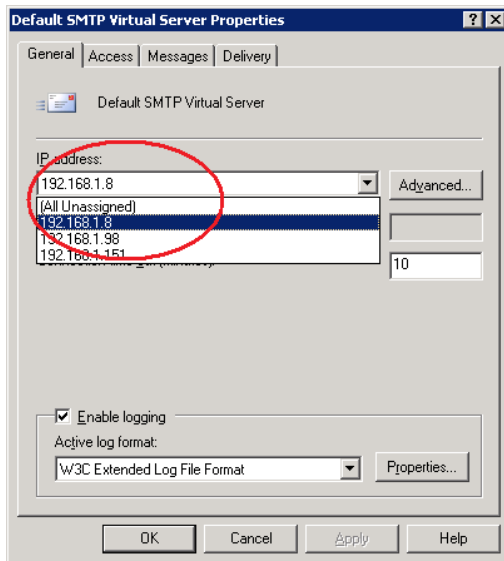


1. Configure an extra IP address on the NIC.

Select the **internet protocol (TCP/IP) properties** of the Network Interface Card. Under **advanced** add an **extra IP address**. This IP will be the address needed for SMS Comfort.



2. Configure the “Default SMTP Virtual Server”



Start **System Manager**: On the **Start** menu, point to **Programs**, point to **Microsoft Exchange**, and then click **System Manager**.

Navigate to Protocols:

“Administrative Group/First Administrative Group/server/protocols/SMTP”

The **Default SMTP Virtual Server** needs to **listen** on **ONE IP** address, and therefore needs to be set on an **specified IP address** (Mostly the default NIC address) and not on (All Unassigned).



3. Install an Smart Host SMTP Connector *Exchange Server 2003*

The **SMTP Server** relays mails to a **Smart Host Connector** to simply **forward mail** to a other **IP address** or mail server.

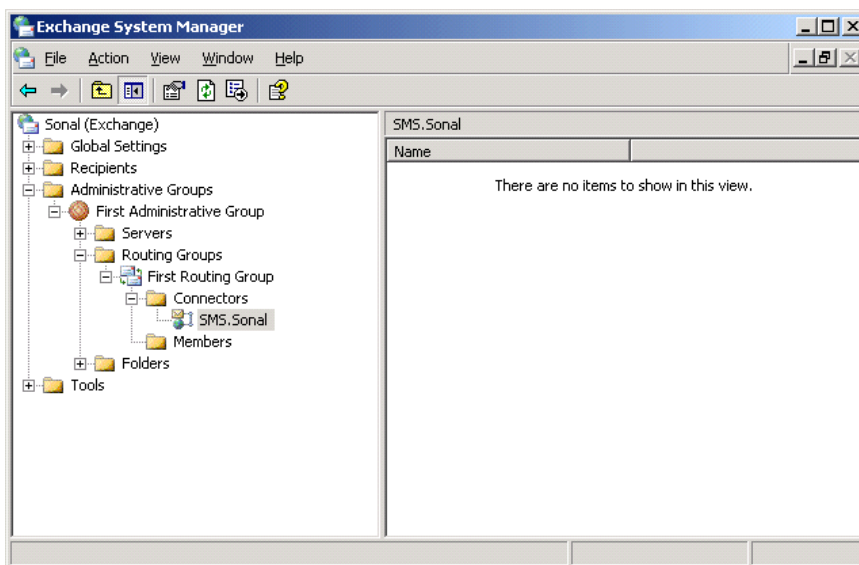
To install an SMTP connector:

Start **System Manager**: On the **Start** menu, point to **Programs**, point to **Microsoft Exchange**, and then click **System Manager**.

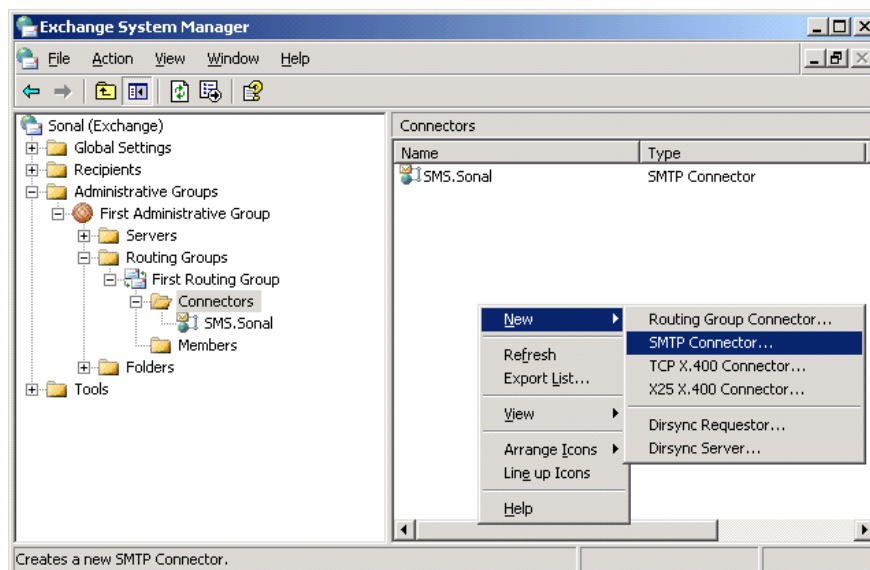
Navigate to Connectors:

If you do not have routing groups defined:

<System Manager> <Administrative Groups> <Administrative Group> <Connectors>



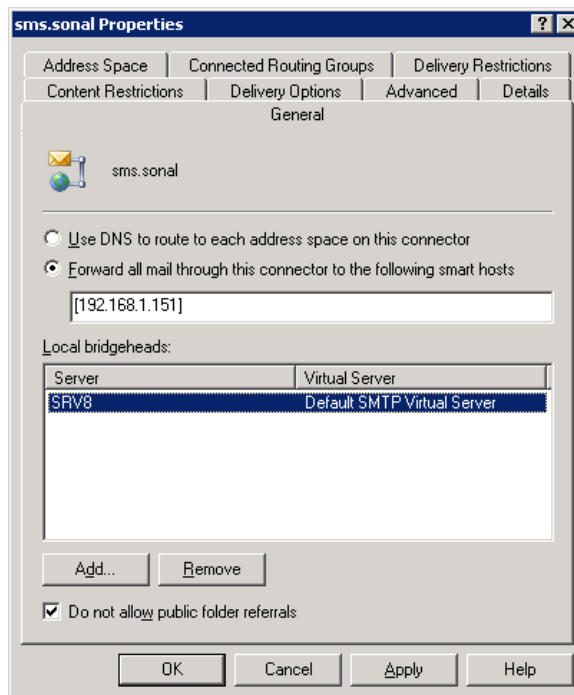
Right-click **Connectors**, select **New**, and then select **SMTP Connector**.





On the **General** tab, type the name of the connector. The name is usually the name of the routing group to which you are connecting.

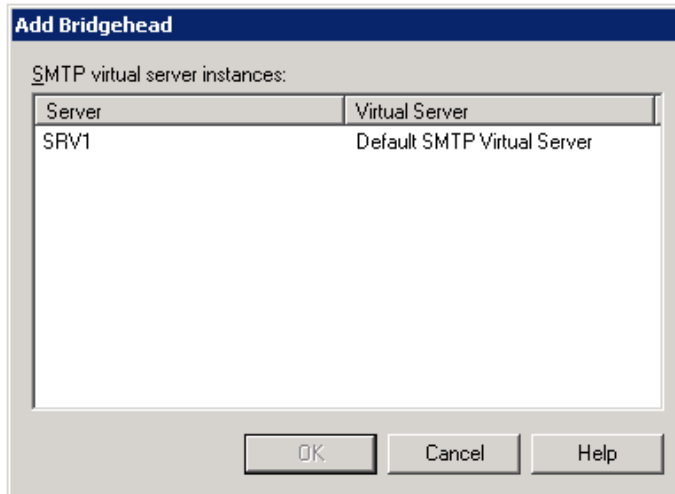
On the **General** tab, select **Forward all mail through this connector to following smart host**, and then type the **2nd IP address** of the server through which you would like to route SMS messages. This value overrides the smart host setting on the **Delivery** tab of the SMTP virtual server properties.



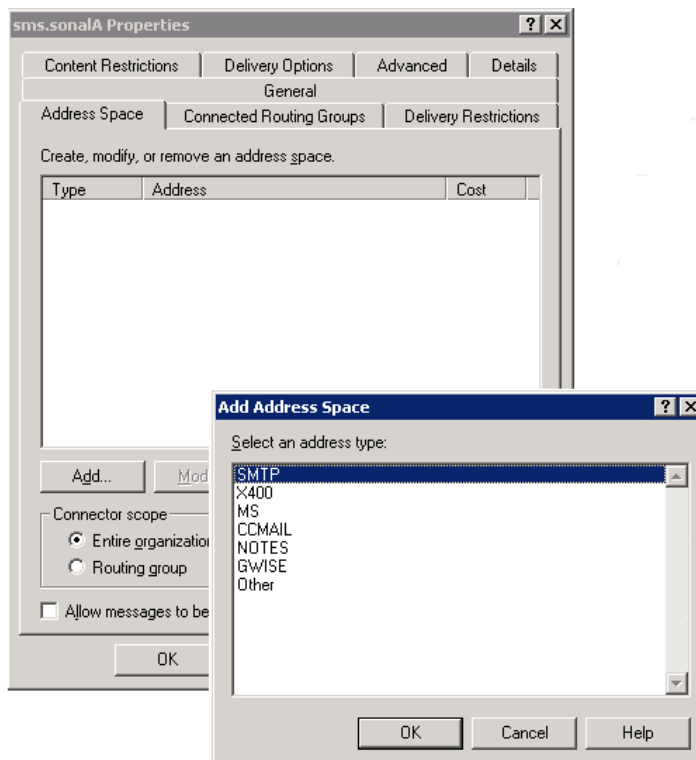
Note Use the **IP address** and **enclose it in brackets**, []. Microsoft SMTP Service normally first checks for a server name and then checks for an IP address. The brackets identify the value as an IP address, so the DNS lookup is bypassed.



On the **General** tab, under **Local Bridgeheads**, click **Add**, and then select a local bridgehead server from the list. Normally this is the **Default SMTP Virtual Server**.



On the **Address Space** tab, click **Add**. Select **SMTP** address type, and then type all necessary information in **Properties**, including cost. (default cost = 1)





Internet Address Space Properties

General

SMTP

E-mail domain: sms.sonal

Cost: 1

OK Cancel Apply Help

SMS.Sonal Properties

General

Content Restrictions Delivery Options Advanced Details

Address Space Connected Routing Groups Delivery Restrictions

Create, modify, or remove an address space.

Type	Address	Cost
SMTP	sms.sonal	1

Add... Modify... Remove

Connector scope

Entire organization

Routing group

Allow messages to be relayed to these domains

OK Cancel Apply Help



4. Install SMS comfort

Run the setup of SMS comfort as a standard setup. For more information consult the SMS comfort manual.

5. Configure SMS comfort on a specified addresses.

Mail server TAB:

Host = IP address of the Default SMTP Virtual Server
Port = SMTP or 25

The screenshot shows the 'SMS Comfort configuration' window with the 'Mail server' tab selected. The 'Host' field is circled in red and contains the value '192.168.1.8'. Other fields include 'Port' (25), 'Signon' (srv8), 'SMS domain' (@sms.sonal), 'Postmaster' (Name: SMS Postmaster, Email: SMSPostmase@sonal.t), and 'Receptionist' (Name: SMS Receptie, Email: SMSReceptie@sonal.be). Buttons for 'Apply', 'Cancel', 'Close', and 'Help' are at the bottom.

Mail server TAB:

Interface = 2nd IP address of the NIC
Port = SMTP or 25

The screenshot shows the 'SMS Comfort configuration' window with the 'Mail server' tab selected. The 'Interface' field is circled in red and contains the value '192.168.1.151'. Other fields include 'Port' (25), 'Network' (192.168.1.0), 'Netmask' (255.255.255.0), 'Auto add mobile', 'Auto add user', and 'Mail end' (\n-). Buttons for 'Apply', 'Cancel', 'Close', and 'Help' are at the bottom.

Note: Default SMS comfort will listen on all IP addresses on the NIC (0.0.0.0)