

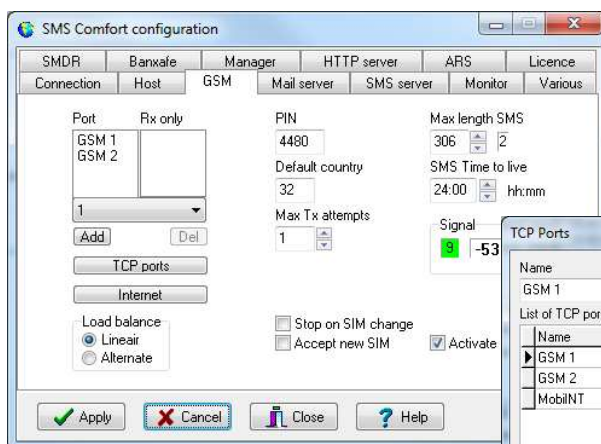


Technical Tip 28

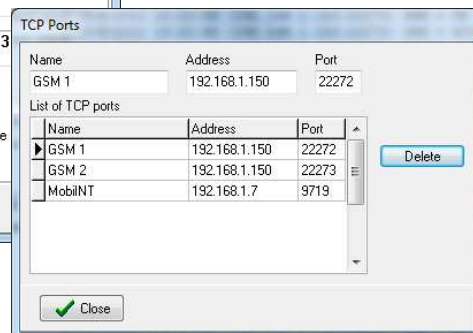
Install AS550 with SMS Comfort

SMS Comfort config

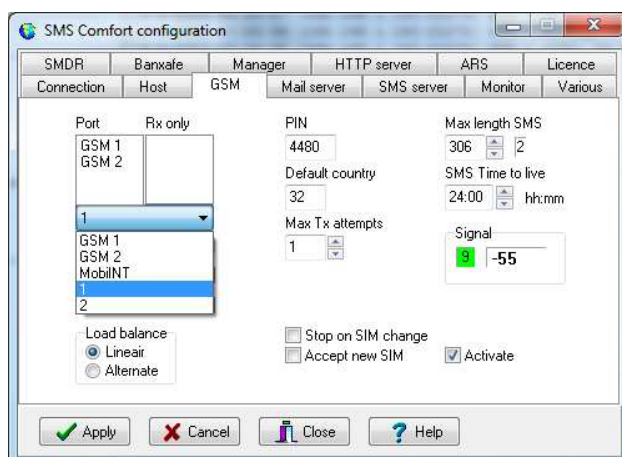
Install SMS Comfort as normal and configure a TCP connection in SMS Comfort.



To add TCP connections select **TCP ports** and configure the connections of the remote devices.



Destination **IP address (AS550)** and connecting **port**.



Select the TCP link out of the dropdown list and **add** as a port.

And **Activate**.

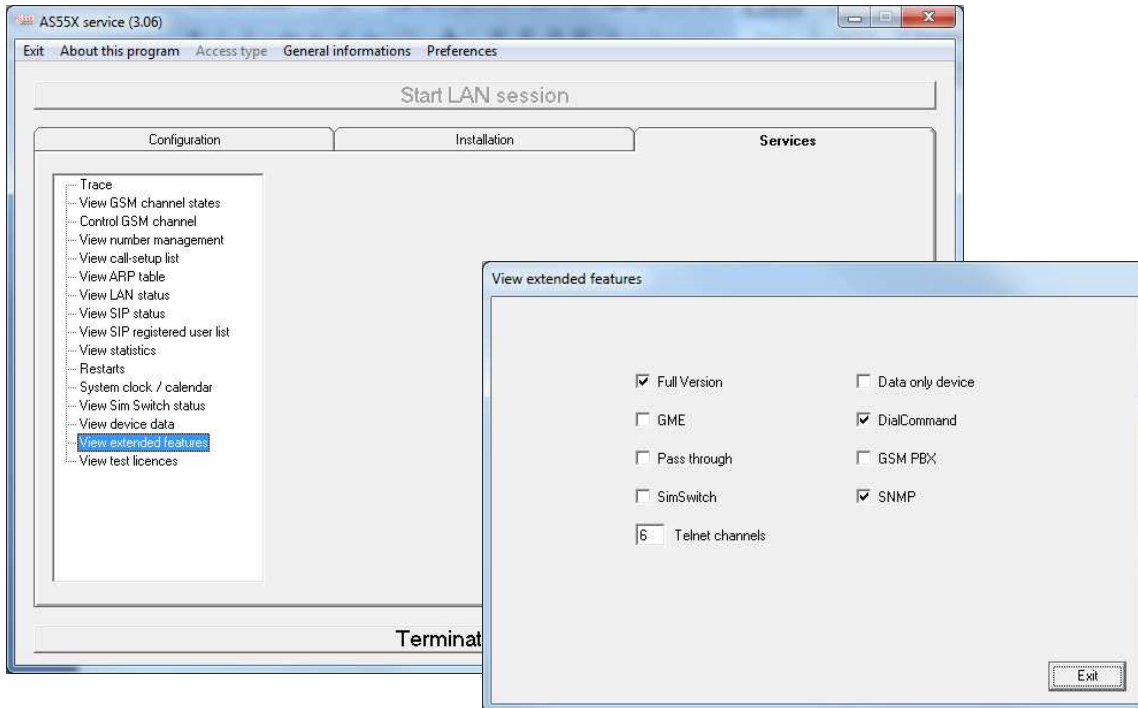


AS550 Voip Mobile Gateway config.

Configure the AS550 Voip as normal for voice use on the PBX.

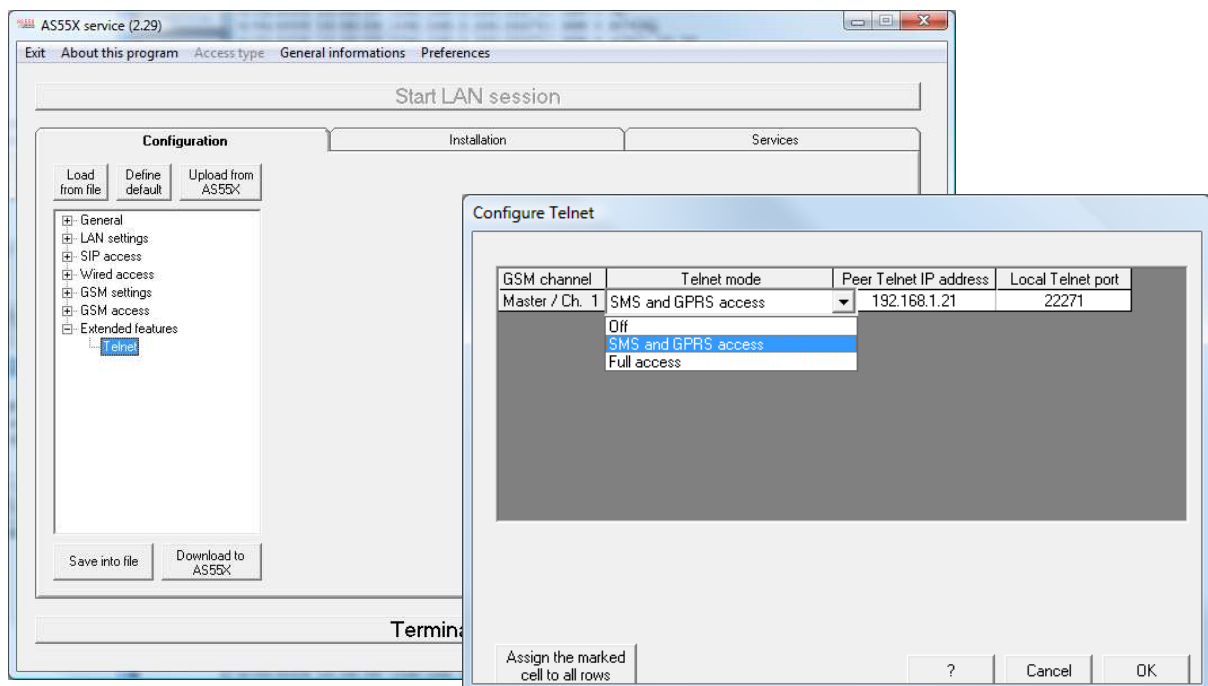
Under **Services - View Extended Features** verify if the **telnet** license on the AS550 is valid.

If no Telnet channels are available, you need to order a telnet license. Verify with your supplier.



To configure the Telnet connection under **Configuration / extended features**

Select **SMS and GPRS access (combination voice)** and add the **IP address of SMS Comfort Server** as **Peer Telnet IP address** and the **local port**.





Verify the connection:

In the **real-time** remote log of SMS Comfort the remote **IP Address** of the **AS550** is displayed as well the connected **port**.

```
6/05/2009 15:44:43 (192.168.1.231:22271) GSM < AT+CMEE=2
6/05/2009 15:44:43 (192.168.1.231:22271) GSM > OK
6/05/2009 15:44:43 (192.168.1.231:22271) GSM < AT+CMGL=0
6/05/2009 15:44:43 (192.168.1.231:22271) GSM > OK
```

In case of problems follow the relevant Tech Tip.

- 13 SMS comfort TechTip 13 WinSock Errors
- 14 SMS comfort TechTip 14 GSM Troubleshooting
- 15 SMS comfort TechTip 15 SMTP Troubleshooting
- 16 SMS comfort TechTip 16 AT and Error State Troubleshooting
- 17 SMS comfort TechTip 17 API Troubleshooting