

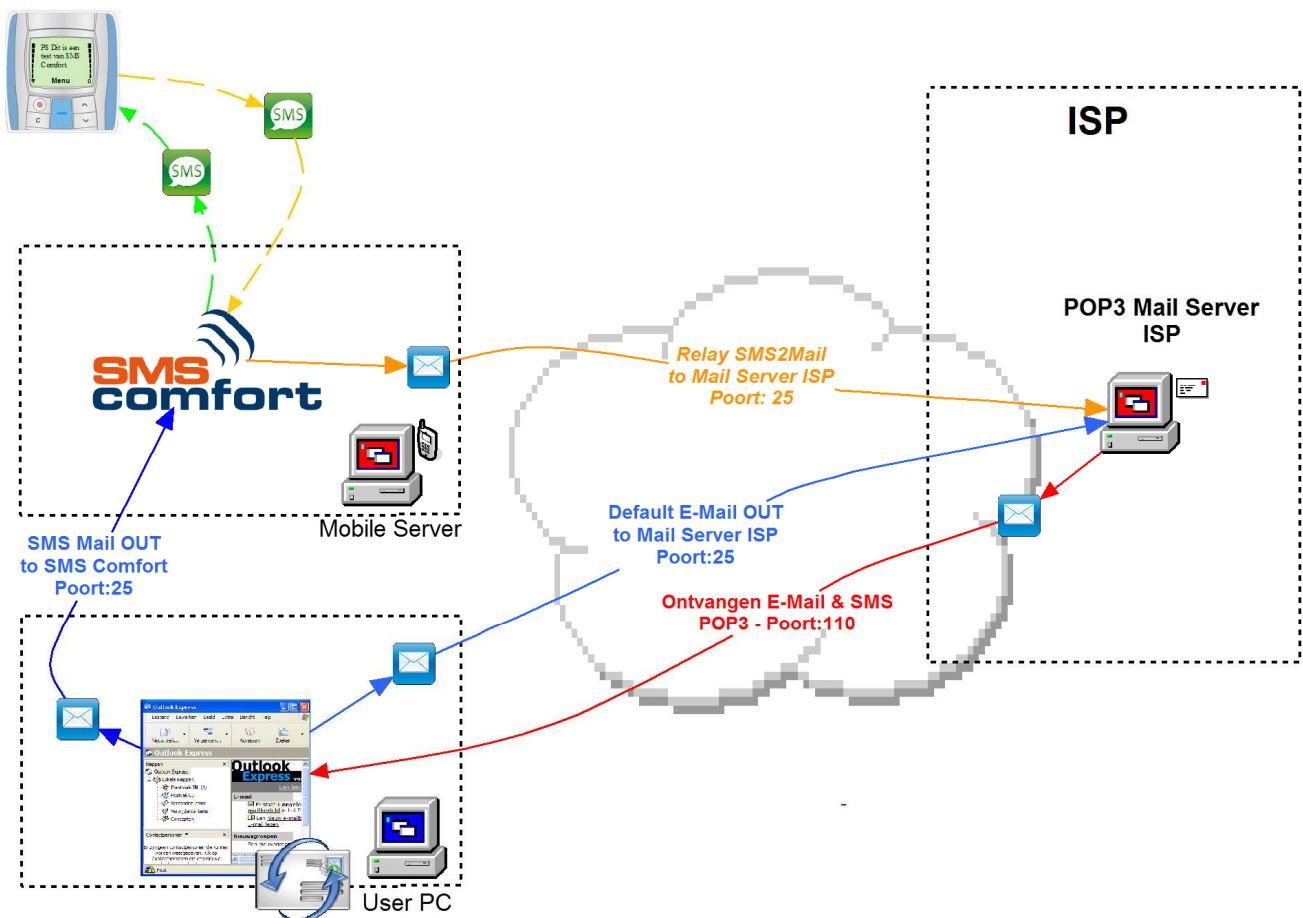


SMS comfort

Technical Tip 2

Routing SMS comfort over a POP3 mail server

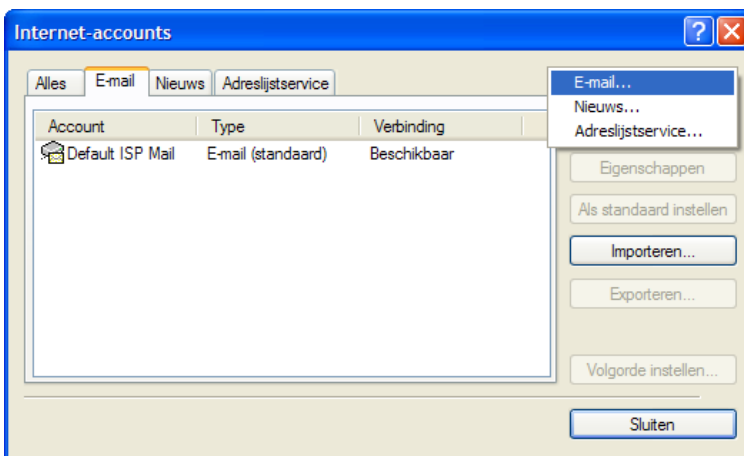
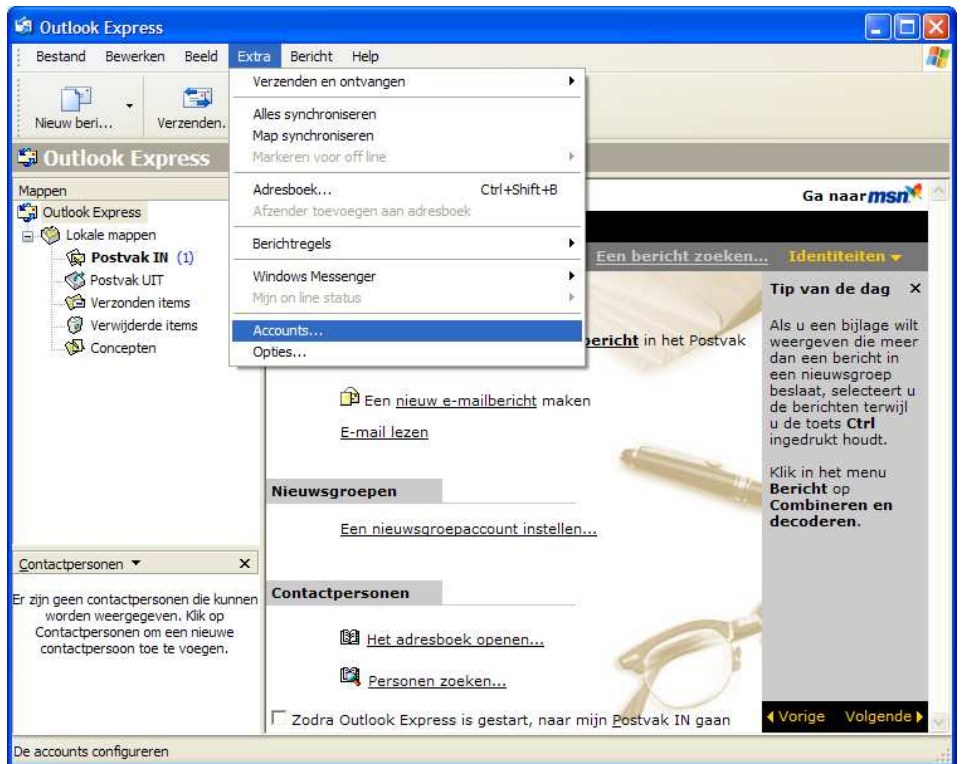
Setup overview :





Configuration Outlook Express for routing SMS-mail to SMS comfort.

Go to extra / accounts and add an extra e-mail account



Normally the default e-mail account already exists. Just add a new e-mail account.



1: Run Wizard:
Name of USER

2: Add USER ISP e-mail

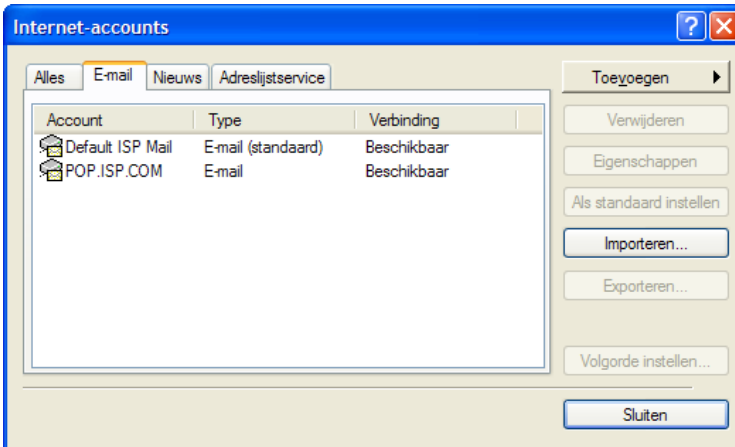
3: Add ISP POP3 server

4: Add the IP address of the SMS comfort.

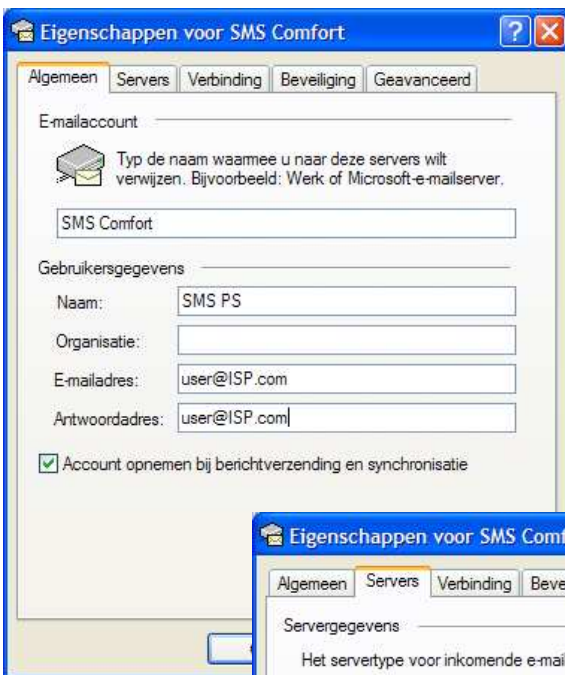
NOTE: SMS comfort must be reachable in the LAN or over VPN

5: Enter the ISP account name and password.

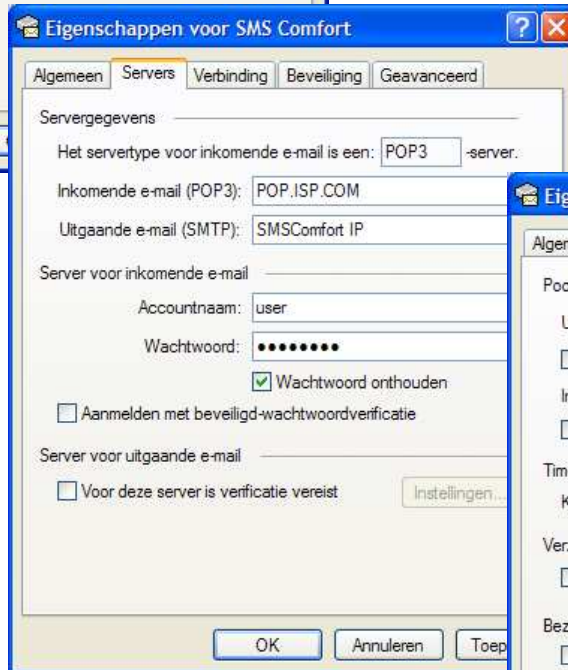
6: Finish the Setup Wizard.

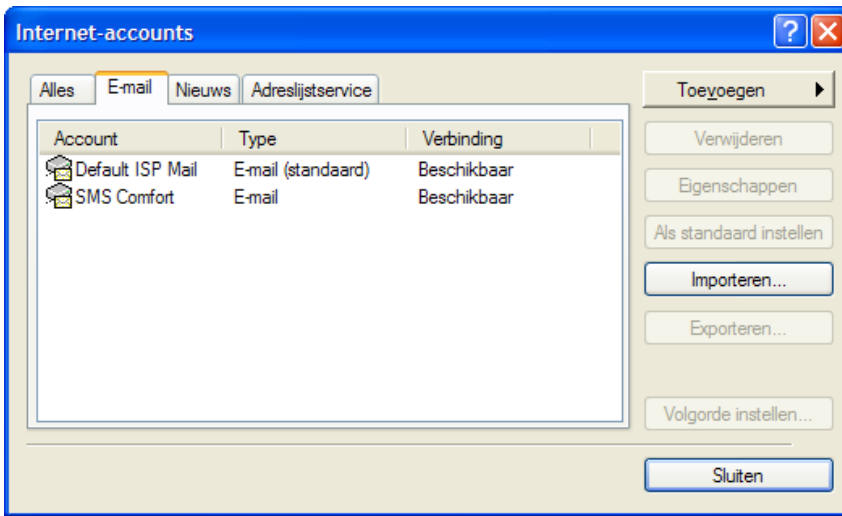


7: Verify the setup and make changes if necessary.



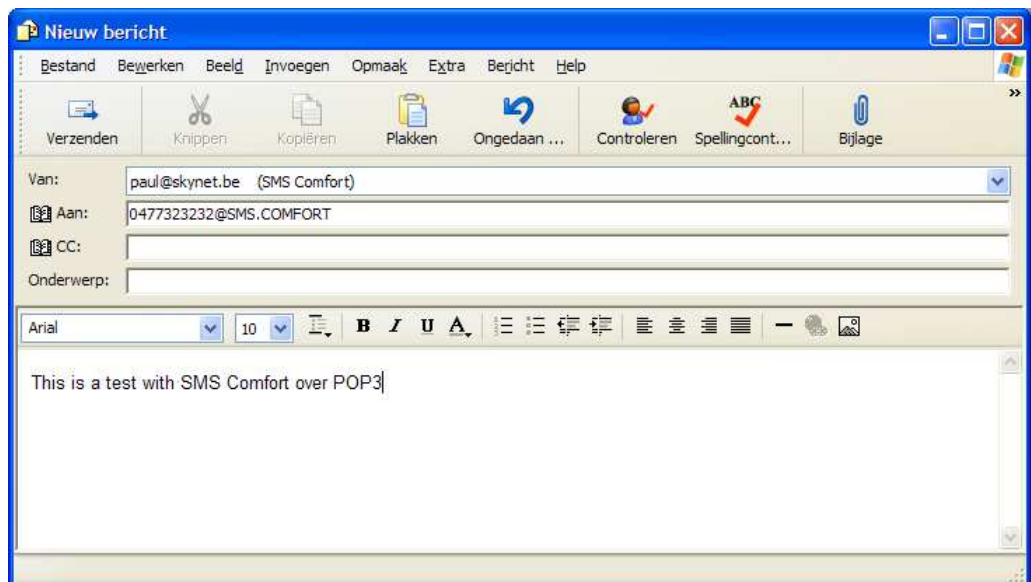
You can change names,
email addresses,
in- and outbound mail servers
User accounts and passwords
If required the SMTP port to SMS comfort.





Outlook Express is now ready to send and receive SMS-mail.

Select the SMS comfort profile to send SMS to a mobile phone.





SMS comfort

SMS comfort Setup

To relay mail you need to configure SMS comfort to accept mail from all IP addresses and set the ISP Mail Server.

Host: SMTP server ISP
Sign on: ISP Account

The screenshot shows the 'Mail server' tab in the SMS Comfort application. The configuration fields are as follows:

Host	smtp.isp.com	Signon	ISP Account
Port	SMTP	Name postmaster	SMS Comfort
Timeout	30 S	Email postmaster	user@isp.com
Retry time	60 S		

Additional options include an 'Undelivered' button and a checked 'Activate' checkbox. The bottom of the window features 'Apply', 'Cancel', and 'Close' buttons.

The screenshot shows the 'SMS server' tab in the SMS Comfort application. The configuration fields are as follows:

Interface	0.0.0.0	Auto add mobile mailbox	<input checked="" type="checkbox"/> From anyone
Port	smtp		<input type="checkbox"/> Only from
Network	0.0.0.0	Delete older than	120 H
Netmask	0.0.0.0		Undelivered
Banner	220 ESMTP SERVER READY	Mail end	---
			<input checked="" type="checkbox"/> Activate

The bottom of the window features 'Apply', 'Cancel', and 'Close' buttons.

Interface : 0.0.0.0 (all interfaces)
Network: 0.0.0.0 (all ip addresses)
Netmask: 0.0.0.0. (all subnets)