



SMS comfort

Technical Tip 7

SMS Comfort DongleServer

SMS Comfort release 1.0.61+



Some USB hubs are well supported over Ethernet. This setup can work but is not guaranteed! SMS comfort Dongle Server can be an alternative if USB hub is not working.

SMS Comfort DongleServer:

In some cases the license dongle can not be installed on the same machine as SMS Comfort. For these cases Sonal made a separate **Dongle Server** that can be installed on a different machine. In all other cases the dongle needs to be installed on the same machine as SMS Comfort.

Reasons to use Dongle Server:

- VM Ware
- No USB on SMS Comfort server
-

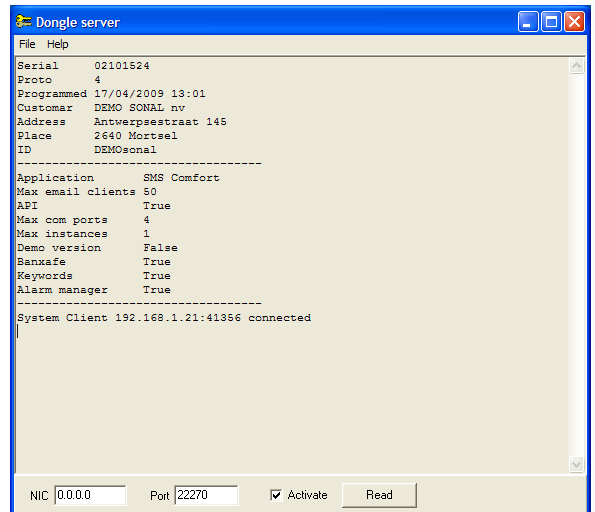
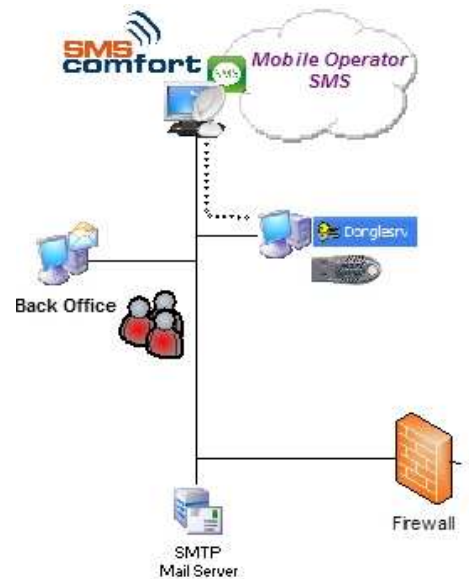
Setup SMS Comfort DongleServer:

Run the "DongleServer.exe" on the machine where the dongle will be installed, and follow the install wizard. Plug the USB Dongle (Proto 3) in a free USB port.

By default the Dongle Server will listen on address 0.0.0.0 port 22270.

System tray indication 

It can take a few minutes before the indication appears on the system tray.







Setup SMS Comfort:

Install **SMS Comfort** as normal.

Run the "SmsComfortsetup.exe" and follow the install wizard. If you are working with the dongle on a separate machine you can no longer use the SMS Comfort Wizard.

To configure SMS Comfort use the standard configuration GUI.

To enable SMS Comfort to work with the remote DongleServer:

Stop the SMS Comfort **service**.

Alter the file "**various_cfg.xml**" in "C:\Program Files\Sona\Sms Comfort\config"

Change the settings in the XML file with Notepad or another text editor.

Default settings (no DongleServer):

```
<Various type="TVarious">
<BackupLogFile>True</BackupLogFile>
<Console>False</Console>
<DaysLeft>0</DaysLeft>
<DefaultCountry>32</DefaultCountry>
<Demo>False</Demo>
<Info>Info</Info>
<MaxEmailClients>5</MaxEmailClients>
<MaxLenBody>160</MaxLenBody>
<MaxComPorts>4</MaxComPorts>
<MaxLenLog>1</MaxLenLog>
<TrayIcon>True</TrayIcon>
<Version>1.0.61 (build 131)</Version>
<EndOfMail>\n-----</EndOfMail>
<NoAliasTimeout>0</NoAliasTimeout>
<SmsDomain>@SMS.TEST</SmsDomain>
<ReceptionistEMail>ps@sona.be</ReceptionistEMail>
<CSVSubject>Overzicht vorige periode</CSVSubject>
<CleanupTime>300</CleanupTime>
<DongleServer>False</DongleServer>
<DongleServerAddr></DongleServerAddr>
<DongleServerPort></DongleServerPort>
</Various>
```

New Settings with DongleServer:

```
<Various type="TVarious">
<BackupLogFile>True</BackupLogFile>
<Console>False</Console>
<DaysLeft>0</DaysLeft>
<DefaultCountry>32</DefaultCountry>
<Demo>False</Demo>
<Info>Info</Info>
<MaxEmailClients>5</MaxEmailClients>
<MaxLenBody>160</MaxLenBody>
<MaxComPorts>4</MaxComPorts>
<MaxLenLog>1</MaxLenLog>
<TrayIcon>True</TrayIcon>
<Version>1.0.61 (build 131)</Version>
<EndOfMail>\n-----</EndOfMail>
<NoAliasTimeout>0</NoAliasTimeout>
<SmsDomain>@SMS.TEST</SmsDomain>
<ReceptionistEMail>ps@sona.be</ReceptionistEMail>
<CSVSubject>Overzicht vorige periode</CSVSubject>
<CleanupTime>300</CleanupTime>
<DongleServer>True</DongleServer>
<DongleServerAddr>ip address</DongleServerAddr>
<DongleServerPort>22270</DongleServerPort>
</Various>
```

Start the SMS Comfort **service** and verify if the license is valid on the Various tab.

